

Prophetic Leadership in Communities without Walls

Presentation to Root and Branch

April 18, 2024

Sherry L. Purcell, IHM, Ph.D.

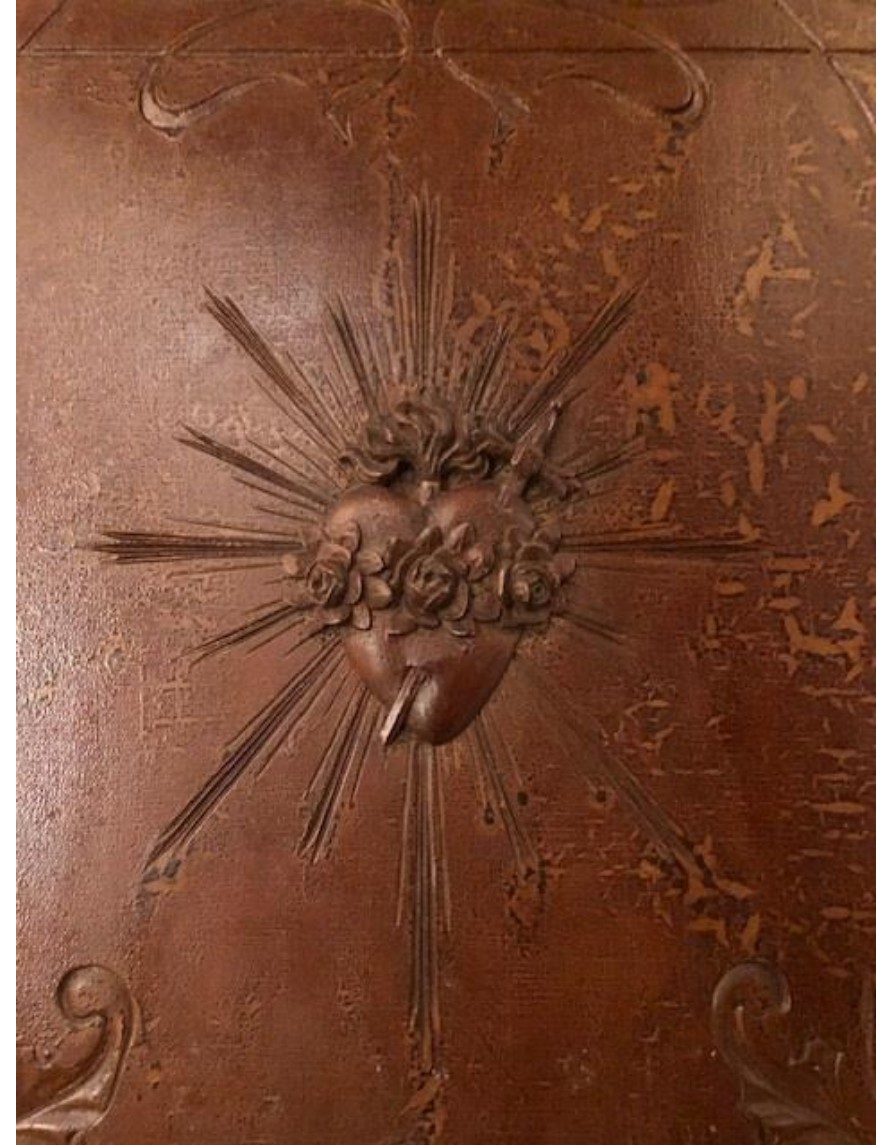
President and PEO

Immaculate Heart Community

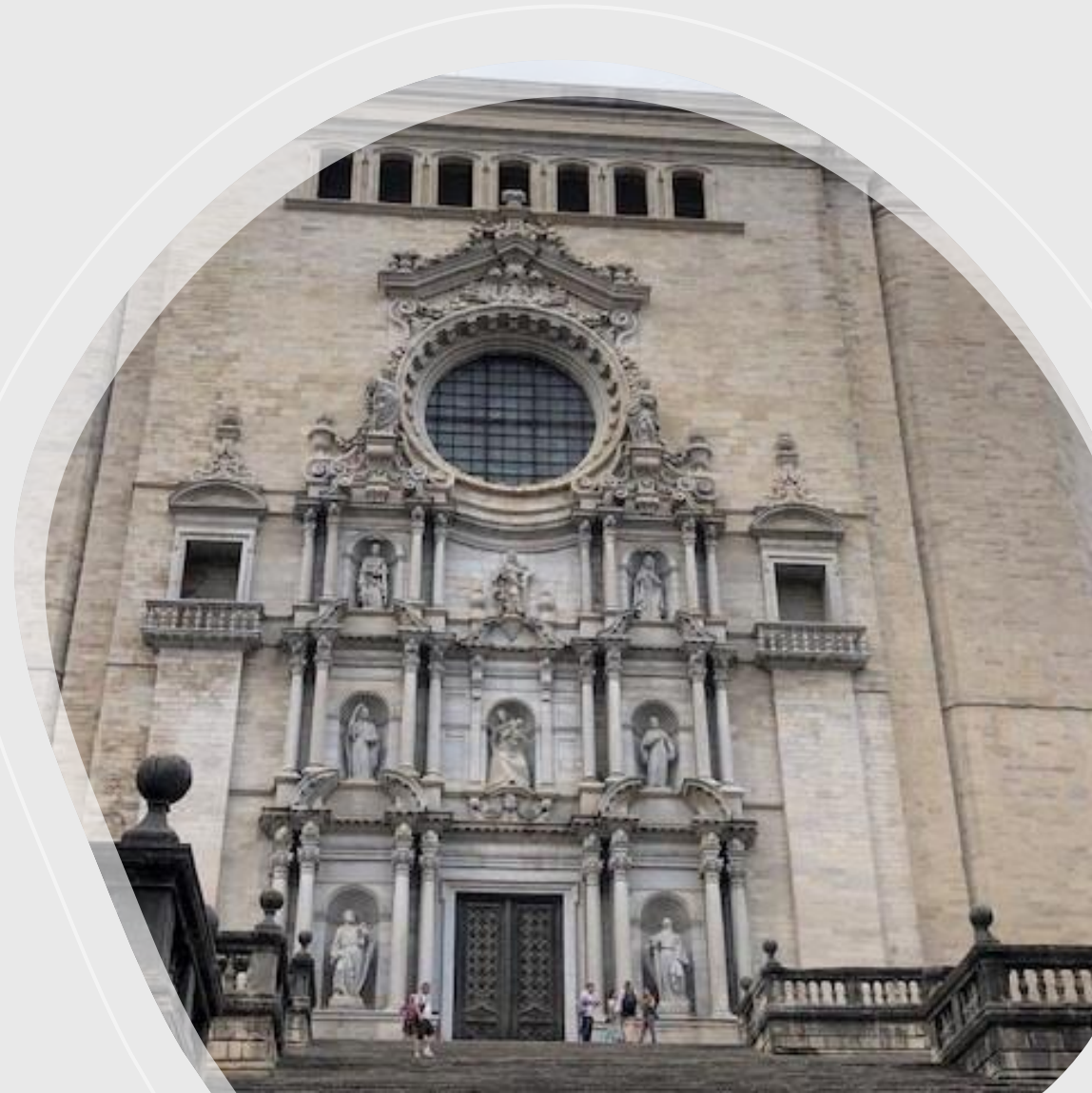


19th Century

Immaculate Heart of Mary





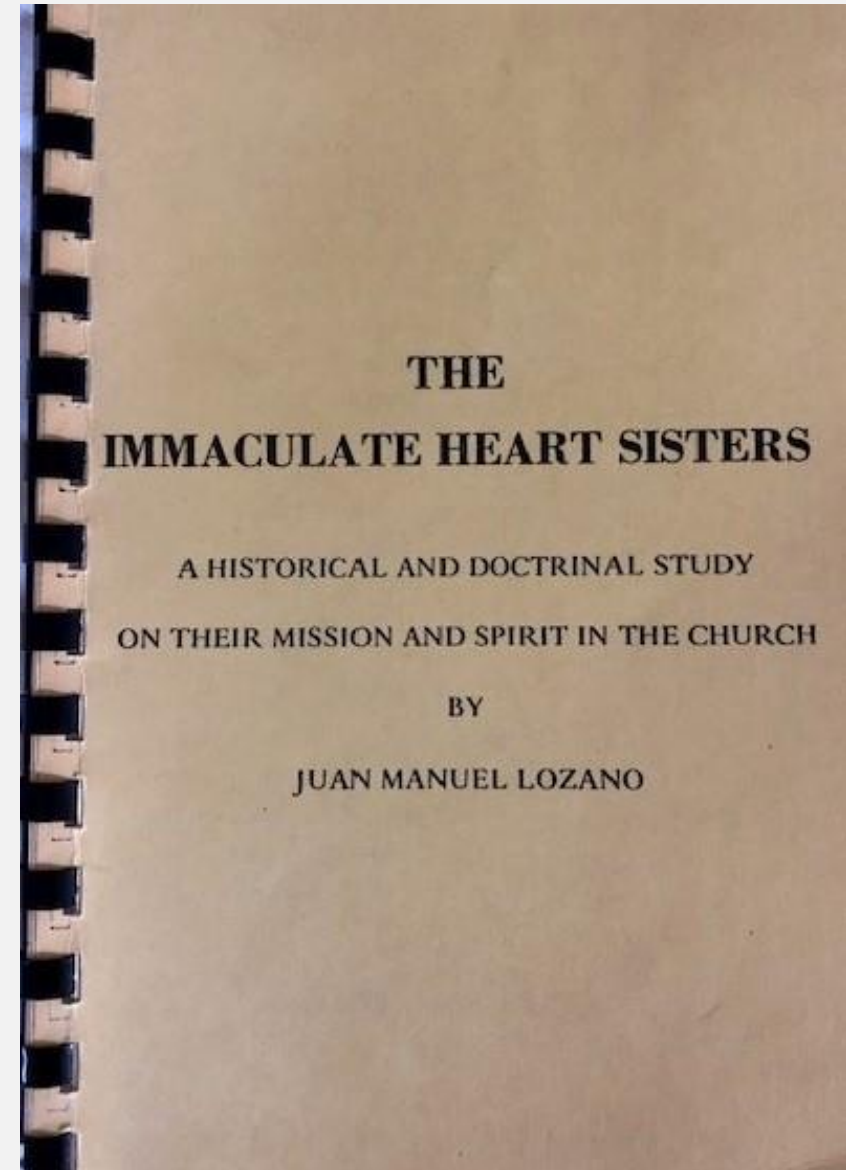






FOUNDING 1848 Olat, Spain

- Spirit of the Founder
 - Education (especially women)
- Apostolic Prayer
- Apostolic Spirit (spiritual renewal of all society)
- Missionary vocation



From Spain to California

1871

8 nuns sent from Spain to California



20th Century

Immaculate Heart of Mary

Immaculate Heart Community (1970)



- 1960s Vatican II calls for progressive reforms in the Catholic church
- The conservative Cardinal McIntyre of Los Angeles rejects the reforms
- IHMs embrace them
- “religious” art created by Corita Kent, IHM is rejected by the Cardinal
- ultimatum from the Cardinal- stop what doing or leave the order

Documentary film: Rebel Hearts on Amazon Prime

Caspary, Anita M.
Address to IHM
Community,
December 6, 1969

- The witness to integrity is a difficult role –
 - it demands purification of one's motives, a rejection of all the means by which one can manipulate others;
 - it calls for just anger without erratic outbursts of temper,
 - for steadiness of purpose cleansed of stubborn immobility.

 - Our Decrees pledge us to an unending search for
 - personhood,
 - relevance and Christian community.
- They deny the attainment or even the ideal of human perfectibility.
 - They demand an asceticism we have never before been asked for,
 - an unselfconscious devotion to the truth,
 - a vigilant and constant concern with the destructive forces in our society,
 - a sensitive response to the needs of others,
 - a willingness to welcome diversity not merely to tolerate it,
 - and a condemnation with the clarity of Christ of the primary evil—hypocrisy, especially religious hypocrisy.



1970- 300 nuns embraced integrity and asked for dispensation from their vows

A new community called the Immaculate Heart Community was formed.

It was:

a Community without Walls

ecumenical- faith based

intentional

inclusive





21st Century

Immaculate Heart Community




Immaculate Heart Community

- **DEMOGRAPHICS TODAY**



- 97 Members
- 7 Candidates
- New members are accepted on an annual basis after a 2-year candidacy process
- Men, women, gay, straight, married, single
- US, Canada, England

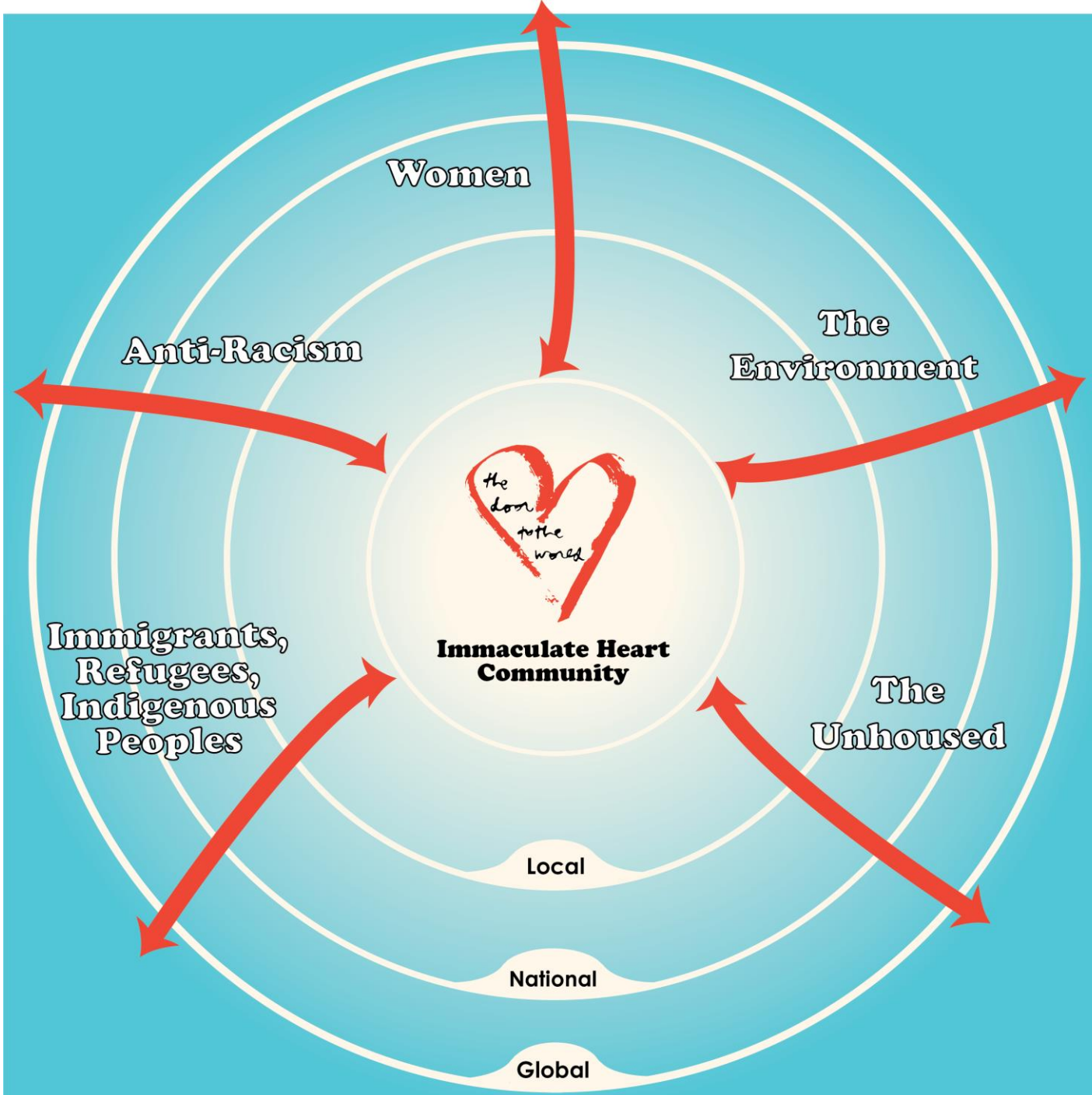




Immaculate Heart Community



- 
- Organized by prayer groups
 - Retreats and workshops
 - Ministry partners
 - Commitment to justice and social justice issues of our times
- 





IHC Goes Global

You may know these people!





SHEFFIELD GIRLS'
SENIOR SCHOOL
GDST

Senior School
Main Entrance and Reception

T: 0114 2660324 Email: enquiries@she.gd
www.sheffieldhighschool.org.uk



Elements of Prophetic Leadership



Carrying Forward the Charism from 1848

- Spirit of the Founder IHM Father Masmitja
 - Education (especially women)
 - Apostolic Prayer
 - Apostolic Spirit (spiritual renewal of all society)
 - Missionary vocation



- Spirit that call us today
 - **Education** (focus on women in Collaborative ministries and Commissions; open workshops and retreats; Lunch and Learns; film series; potential scholarships)
 - **Gospel orientation** (prayer groups; variation in prayer practices- reflective meditations, art, dance; participation by all; ecumenical outreach of interest to others)
 - **Christian Spirit** (spiritual renewal of all society; global connections possible in all parts of the world to address issues common to the human condition)
 - **Outreach** to Europe and Africa through technology and transport available today; growth beyond the confines of the IHC as we have known it

Carrying Forward the Charism from 1970

- Spirit of the Founder
IHC Anita Caspary
- Same Spirit that calls us today



- an unending search for **personhood, relevance** and **Christian community**.
- an unselfconscious devotion to the **truth**,
- a **vigilant and constant concern** with the **destructive forces** in our society,
- a **sensitive response** to the needs of others,
- a willingness to **welcome diversity** not merely to tolerate it,
- a condemnation with the clarity of Christ of the primary evil—**hypocrisy**, especially religious hypocrisy.

Elements of Prophetic Leadership

- Consciousness and concern about needs of the times
- Open to divine guidance
- Willingness to take risks to follow that guidance



Immaculate Heart Community

The prophetic leadership of our founders
has created a prophetic community for
our times

In existence over 50 years

Embraces much of what people are
looking for and need today



Immaculate Heart Community

MOVING TOWARD A GLOBAL IDENTITY

- Friends and partners in US, Canada, Europe, and Africa
- People in a search of spiritual growth and development
- People wanting to be guided by their faith to create a new world order of peace and justice
- People wanting to reform the church to be accepting of women, LGBTQ+, and those deemed as “other”
- People wanting to live as Jesus taught



Closing Questions for Consideration

Might there be a Call right now for a global Community without walls?

- No geographic boundaries
- Intentional
- Ecumenical -Faith-based
- Inclusive
- Commonality of interests in justice and social justice issues



Closing Questions for Consideration

Might we not be stronger together if we joined together to address common concerns?



Closing Questions for Consideration

Is this our time to be prophetic?



Immaculate Heart Community

MOVING TOWARD A GLOBAL IDENTITY

- LET'S TALK!
- THANK YOU for Listening

